



FELDMAN SEASIDE APARTMENTS

Davis Square Architects teamed up with Affirmative Investments and the Chelsea Jewish Foundation on Feldman Seaside Apartments, a new construction, four-story, 40-apartment development for the elderly community located in Winthrop, Massachusetts. Features include a common room with a kitchenette for social gatherings, scenic views of the ocean, and a nearby golf course. Apartments range from one- to two-bedrooms, with 37 affordable units and three market-rate units. The development was a joint effort between Affirmative Investments and Chelsea Jewish Foundation, working closely with Temple Tifereth Israel to develop a 99-year lease.

The program helped fund a new building for the Temple, as well as new affordable elderly housing in the town of Winthrop. ■

LOCATION

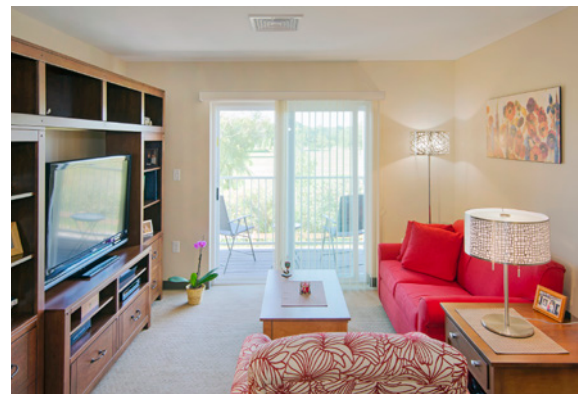
Winthrop, MA

DEVELOPER

Affirmative Investments
Chelsea Jewish Foundation

SCOPE

New construction
Age-restricted housing
40 units



DAVIS
SQUARE
ARCHITECTS

HOUSING & MIXED-USE
davissquarearchitects.com