



# ROSEMONT SQUARE APARTMENTS

---

Located only 15 minutes from downtown Boston, Rosemont Square Apartments sits on 38 acres of beautifully landscaped grounds in Randolph, Massachusetts. In order to transform the 500-unit development into a luxury, high-service rental community and effectively reposition its status on the market, Davis Square Architects was asked to renovate 384 existing units as well as design 120 new 1-bedroom units, for a total of 504 units altogether.

The scope of work for the existing units included kitchen and bath renovations, interior painting, exterior deck repair and re-siding, new entry canopies and accessibility upgrades. The new units were built using

Universal Design, and are housed within three infill buildings arranged along reconfigured roads and utilities. A new community clubhouse, pool and maintenance building as well as five enclosed garage structures complete the development and help its marketplace repositioning. ■

## LOCATION

---

Randolph, MA

## DEVELOPER

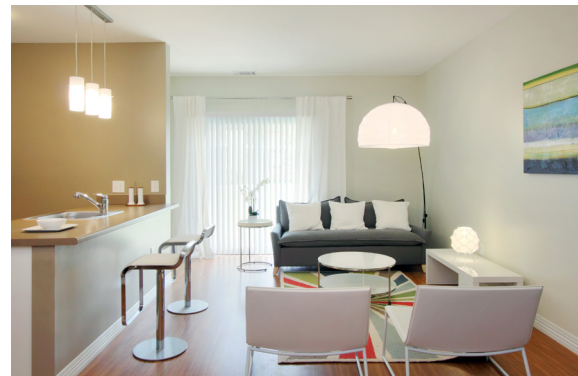
---

Beacon Communities LLC

## SCOPE

---

Renovation  
New construction  
384 existing units  
120 new units



**DAVIS  
SQUARE**  
ARCHITECTS

**HOUSING & MIXED-USE**  
[davissquarearchitects.com](http://davissquarearchitects.com)